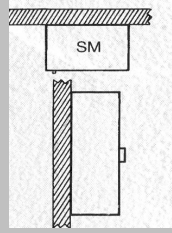


SURFACE MOUNT CABINETS

	INSIDE CABINET DIMENSIONS		
	Height	Width	Depth
145SM	13"	13-1/2"	5-1/4"
147SM	13"	13-1/2"	7"
180SM	17-1/2"	17-1/2"	7"
184SM	30-1/2"	15-1/2"	9-1/2"
186SM	37-3/4"	15-1/2"	9-1/2"

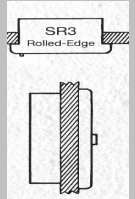


FEATURES

- Our most popular style
- Rounded corners for safety
- Variety of sizes to meet your needs
- Made from corrosive resistant material.
- Designed for quick one pull to opening. No twist and pull.

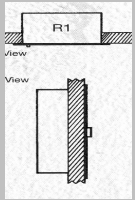
SEMI-RECESSED CABINETS

	INSIDE CABINET DIMENSIONS			WALL DIMENSIONS			ROUGH WALL OPENING		
	Height	Width	Depth	Height	Width	Depth	Height	Width	Depth
145SR3	11"	11-1/2"	5-1/4"	13"	13-1/2"	2-1/2"	12"	12-1/2"	2-3/4"
147SR3	11"	11-1/2"	7"	13"	13-1/2"	3-1/8"	12"	12-1/2"	4"
180SR3	14"	14"	7"	17-1/2"	17-1/2"	3-1/8"	15"	15"	4"
184SR3	27"	12"	9"	30-1/2"	15-1/2"	2-1/2"	28"	13"	4"



RECESSED CABINETS

	INSIDE CABINET DIMENSIONS			WALL DIMENSIONS			ROUGH WALL OPENING		
	Height	Width	Depth	Height	Width	Depth	Height	Width	Depth
145R1	11"	11-1/2"	5-1/4"	13"	13-1/2"	15/16"	12"	12-1/2"	4-1/2"
147R1	11"	11-1/2"	7"	13"	13-1/2"	15/16"	12"	12-1/2"	6-1/4"
180R1	14"	14"	7"	17-1/2"	17-1/2"	15/16"	15"	15"	6-1/4"
184R1	27"	12"	9"	30-1/2"	15-1/2"	15/16"	28"	13"	6-1/4"

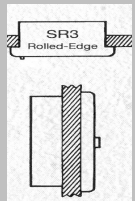


FEATURES

- Recessed and semi recessed cabinets are ADA compliant.
- Semi-recessed cabinets are designed to fit in standard 2x4 wall construction.
- Variety of sizes to meet your needs
- Made from corrosive resistant material.
- Designed for quick one pull to open. No twist and pull.

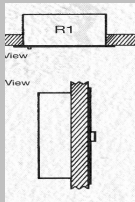
FIRE RATED SEMI-RECESSED CABINETS

	INSIDE CABINET DIMENSIONS			WALL DIMENSIONS			ROUGH WALL OPENING		
	Height	Width	Depth	Height	Width	Depth	Height	Width	Depth
145SR3	11"	11-1/2"	4-1/2"	13"	13-1/2"	3-1/8"	12-3/4"	13-1/4"	3-1/8"
147SR3	11"	11-1/2"	6-1/4"	13"	13-1/2"	3-1/8"	12-3/4"	13-1/4"	4-7/8"
180SR3	14"	14"	6-1/4"	17-1/2"	17-1/2"	3-1/8"	15-3/4"	15-3/4"	4-7/8"
184SR3	27"	12"	6-1/4"	30-1/2"	15-1/2"	2-1/2"	28-3/4"	13-3/4"	4-7/8"



FIRE RATED RECESSED CABINETS

	INSIDE CABINET DIMENSIONS			WALL DIMENSIONS			ROUGH WALL OPENING		
	Height	Width	Depth	Height	Width	Depth	Height	Width	Depth
FSB145R1	11"	11-1/2"	4-1/2"	13"	13-1/2"	15/16"	12-3/4"	13-1/4"	5-1/4"
FSB147R1	11"	11-1/2"	6-1/4"	13"	13-1/2"	15/16"	12-3/4"	13-1/4"	7"
FSB180R1	14"	14"	6-1/4"	17-1/2"	17-1/2"	15/16"	15-3/4"	15-3/4"	7"
FSB184R1	27"	12"	6-1/4"	30-1/2"	15-1/2"	5/16"	28-3/4"	13-3/4"	7"



This well designed cabinet required only one tank, and the unique bracket design secures the fire rated sheet rock around the tank. It meets UL-147 and is classified by Underwriters Laboratories Inc., and is for use in penetration fire stop systems. Modern metal Products is the first to have this fire rating with this design. The cabinet must be installed to our instruction or the rating will be void. Refer to UL Fire Resistance directory 1996 edition - WL7005. Patent pending.

FEATURES

- Maintains the integrity of 1 and 2 hour fire rated walls with simple designed UL classified cabinet.
- Special designed FSB brackets with slots hold your fire rated type X sheet rock firmly in place.
- Made from rust resistant material.
- Recessed and semi recessed cabinets are ADA compliant.
- No double tank system - keeps the freight cost down and still provides the 2 hour fire rating.

FSB Brackets

CABINET VIEWED FROM BACK

